

Neurology for the PCP

Friday, Nov. 14, 2025 • MSU Management Education Center

Description

This conference is geared toward primary care partners. The key objectives are to help the primary care provider identify neurological symptoms and treatment options.

Target audience

- Physicians
- Physician assistants
- Nurses
- Nurse practitioners
- Physical and occupational therapists
- Allied health
- Residents, fellows and medical students in the specialties of family medicine, internal medicine and pediatrics

Objectives

At the conclusion of this activity, learners should be better able to:

- Identify signs and symptoms associated with specific neurologic disorders
- Explain treatment options for patients with neurological symptoms
- Instruct participants on guidelines for patient referral
- Describe follow-up recommendations to reduce readmissions

Faculty disclosure

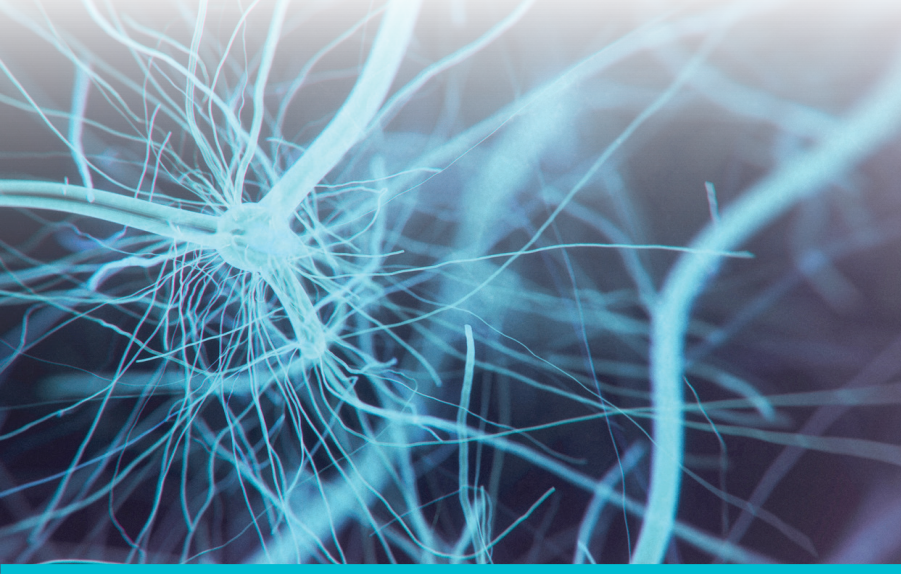
All speakers and members of the planning committee have been asked to disclose any relevant relationships they may have with commercial interests. The presence or absence of relationships will be disclosed at the time of the meeting.

Accreditation statement (CME accreditation)

This activity is approved for **AMA PRA Category 1 Credits™** and **ANCC Nursing Contact Hours**.

For more information, including specific CME credit information, visit beaumont.cloud-cme.com/neuropcp2025.

NON-PROFIT ORG
U.S. POSTAGE
PAID
PERMIT NO 404
ROYAL OAK
MICHIGAN



Neurology for the primary care partners (PCP)

Care and management of the neurology patient for primary care clinicians.

Friday, Nov. 14, 2025

MSU Management Education Center
811 Square Lake Road • Troy, MI 48098



Neuroscience Center
CC42544-66151, MC 307E
3555 W. 13 Mile Road, Suite N120
Royal Oak, MI 48073

Neurology for the PCP

Friday, Nov. 14, 2025

MSU Management Education Center
Troy, MI

Corewell Health

CH_25470dL_25657 © Corewell Health 07/2025

Faculty and planning committee*

- *Activity Director**
Daniel Menkes, M.D.
Neurology Health System Chair,
Corewell Health William Beaumont
University Hospital, Royal Oak, MI
Professor, Neurology, OUWB School
of Medicine

Annas Aljassem, M.D.
Physical Medicine and Rehabilitation,
Corewell Health William Beaumont
University Hospital, Royal Oak, MI
Assistant Professor, Neurology OUWB
School of Medicine

Dennis Bojrab, M.D. Otolaryngology,
Corewell Health William Beaumont
University Hospital, Royal Oak, MI,
Professor, Otolaryngology, OUWB
School of Medicine

Jonathan Fellows, D.O.
Neurology, Corewell Health William
Beaumont University Hospital,
Royal Oak, MI
Assistant Professor, Neurology,
OUWB School of Medicine

Julie Ferris, M.D.
Physical Medicine & Rehabilitation,
Corewell Health William Beaumont
University Hospital, Royal Oak, MI
Assistant Professor, Physical Medicine
& Rehabilitation, OUWB School of
Medicine

Kevin Gillman, PT, MPT
Physical Medicine and Rehabilitation,
Corewell Health William Beaumont
University Hospital, Royal Oak, MI

Rebecca Grysiewicz, D.O.
Neurology, Corewell Health William
Beaumont University Hospital,
Royal Oak, MI
Assistant Professor, Neurology,
OUWB School of Medicine

Adam Kuhlman, D.O.
Neurology, Corewell Health William
Beaumont University Hospital,
Royal Oak, MI
Assistant Professor, Neurology,
OUWB School of Medicine
- Elizabeth Leleszi**
Pediatrics, Corewell Health Children's
William Beaumont University
Hospital, Royal Oak, MI
Assistant Professor, Neurology,
OUWB School of Medicine

***Anne Marie Michon, MSN-RN, CPNP-PC**
Pediatrics, Corewell Health Children's
William Beaumont University
Hospital, Royal Oak, MI

Nadar Mina, M.D.
Internal Medicine, Corewell Health
William Beaumont University
Hospital, Royal Oak, MI
Associate Professor, Neurology,
OUWB School of Medicine

Kara Morsches, PT, DPT, NCS
Physical Medicine and Rehabilitation,
Corewell Health William Beaumont
University Hospital, Royal Oak, MI

Miguelangelo Perez-Cruet, M.D.
Neurosurgery, Corewell Health
William Beaumont University
Hospital, Royal Oak, MI
Professor, Neurosurgery, OUWB
School of Medicine

***Lori Sheridan, BBA**
Neuroscience Outreach Coordinator,
Corewell Health William Beaumont
University Hospital, Royal Oak, MI

Lori Stec, M.D.
Corewell Health William Beaumont
University Hospital, Royal Oak, MI
Professor, Ophthalmology, OUWB
School of Medicine

Rasha Waheed, M.D.
Neurology, Corewell Health William
Beaumont University Hospital,
Royal Oak, MI
Instructor, Neurology, OUWB School
of Medicine

Andrew Zillgitt, D.O.
Neurology, Corewell Health William
Beaumont University Hospital,
Royal Oak, MI
Associate Professor, Neurology,
OUWB School of Medicine

Agenda

7:55–8 a.m.	Welcome Daniel Menkes, M.D.
8–8:40 a.m.	Alzheimer’s Disease: What are the Signs? Jonathan Fellows, D.O.
8:40–9:15 a.m.	Stroke Management for the PCP Rebbeca Grysiewicz, D.O.
9:15–9:50 a.m.	Tremor and Parkinson's Disease Adam Kuhlman, D.O.
9:50–10:10 a.m.	Break
10:10–10:50 a.m.	Neck and Back Pain: When is it Serious? Miguelangelo (Mick) Perez-Cruet, M.D.
10:50–11:25 a.m.	Neurology Sports Medicine for the Primary Care Julie Ferris, M.D.
11:25 a.m.– Noon	Neuropathic Pain Management Annas Aljassem, M.D.
Noon–1 p.m.	Lunch
12:15–12:45 p.m.	Lunch Lecture: What to do for Uncle Ray? How to Start an Epilepsy Evaluation and When to Refer to Neurology Andrew Zillgitt, D.O.
1–1:40 p.m.	Headache Management Elizabeth Leleszi, M.D.
1:40–2:15 p.m.	How to Identify a Sleep Disorder and When to Refer for a Sleep Study Nader Minda, M.D.
2:15–2:50 p.m.	Multiple Sclerosis, Symptom Identification and When to Refer to Neurology Waheed Rasha, M.D.
2:50–3:10 p.m.	Break
3:10–3:45 p.m.	Management of Dizziness and Vertigo Kevin Gillman, PT, MPT and Kara Morsches, PT, DPT, NCS
3:45–4:20 p.m.	Hearing Loss: Early Detection and Intervention Dennis Bojrab, M.D.
4:20–4:55 p.m.	Eye Disorders for the PCP Lori Stec, M.D.
4:55–5 p.m.	Closing Remarks Daniel Menkes, M.D.

Neurology for the PCP

Friday, Nov. 14, 2025 • MSU Management Education Center



Registration link
beaumont.cloud-cme.com/neuropcp2025

Category description	Virtual	In person	
	must register by 11/12	through 11/12	day of event
Physician	\$125	\$175	\$200
Non-physician	\$75	\$125	\$150
Resident/fellow (No CME)	\$75	\$125	\$150
Medical student (No CME)	\$25	\$75	\$100

Cancellations or refund requests must be received by November 12, 2025. A processing fee of \$30 will be assessed to all cancelled registrations. Cancellation and refund requests after November 12, 2025 will not be honored. To cancel a registration, email: CHEcme@corewellhealth.org with “Cancellation” in the subject line.

Registration questions: email Becky Kirk at rebecca.kirk@corewellhealth.org

CME-related questions: contact CHEcme@corewellhealth.org

Event related questions: contact Lori Sheridan at 248.551.2309 or lori.sheridan@corewellhealth.org

Corewell Health is committed to making its activities accessible to all individuals. If you are in need of a special accommodation, please do not hesitate to contact us.

